

Participating Ministry Conference Center (MCC) Construction on May 29 ~ 30, 2010

A team of 21 saints from 3 localities of south bay churches went to Anaheim on the Memorial Day's weekend and participated the construction of MCC (Building 8).

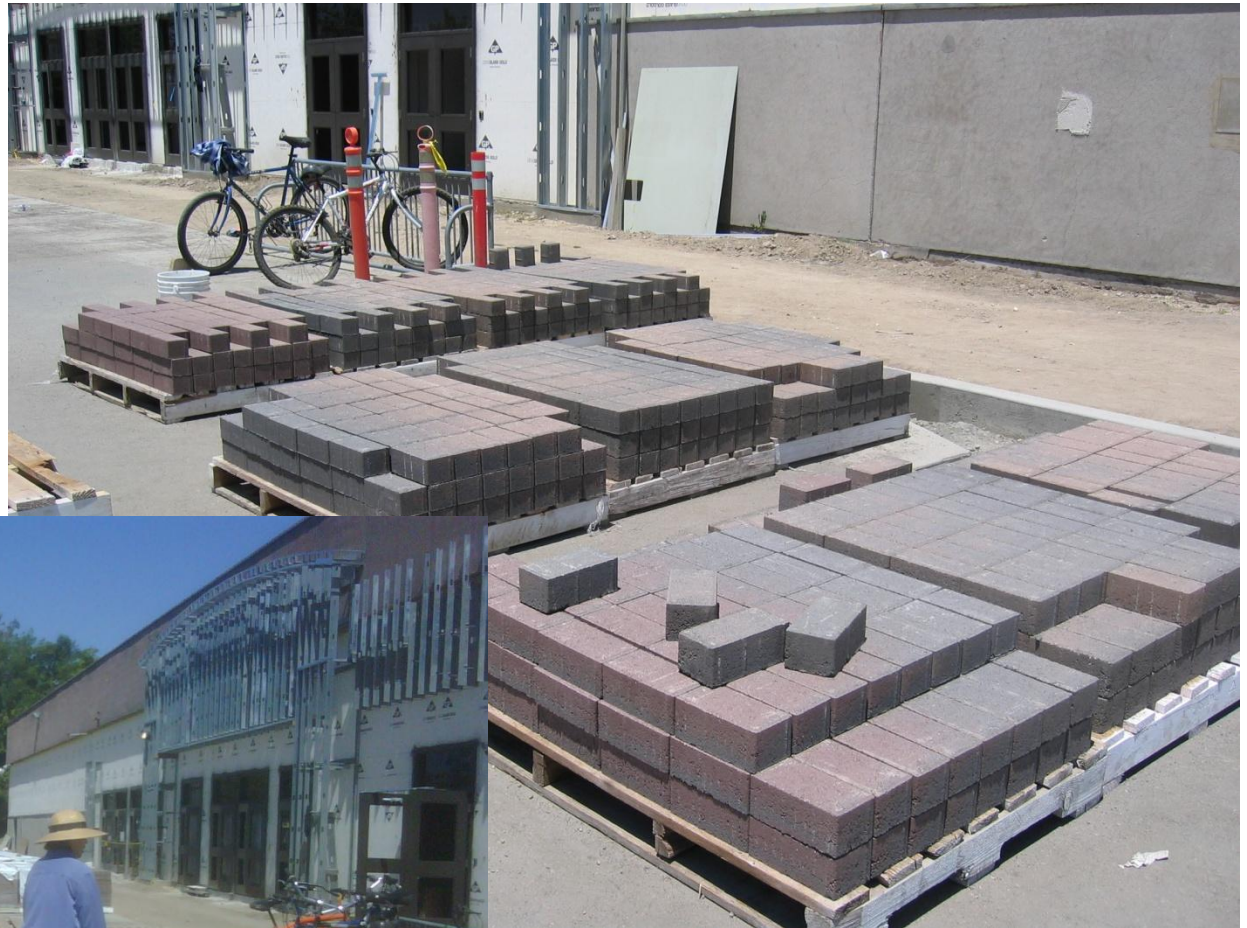


This is an aerial view obtained from the Ministry Conference Center (MCC) website. According to the brief statement on the website, the property boundary is demarcated by the red line. The structure being retrofitted into the Ministry Conference Center (outlined in blue) is about 450 feet north-south by 240 feet east-west with an approximate area of 109,000 square feet (about 3 acres).

Currently, a row of palm trees have been planted along the boundary next to Highway I-5. Most of the green grass area have been paved with brick pavers except a small area at the upper-right corner. The existing asphalt along the left boundary line has been removed and the landscape planters have been built, but the pavers have not been installed yet. Demolition of the existing concrete slab around the Building 7 (in front of the MCC building) is in progress. Eventually, the entire parking lot will be paved with concrete pavers, which will provide very good storm drain capability through the gap of the pavers. With additional on-grade planters functioning as drain wells, the site does not require separate underground storm drain system.

For the MCC building itself, the main entrance is on the left side, the upper part is the future facility for the Middle Age Training. In the past two years, majority of the construction was focused on the structural retrofit and mechanical improvement. Except the existing roof being remained, almost the entire building was rebuilt.

The concrete pavers for the parking lot have come in different color tones from red , light blue to charcoal. In order for them to be laid in a consistent and blending color pattern on the ground, it needs a mixing process before they can be delivered to the spot for paving.



A working station has ten pallets. The process is to take approximately same number of the pavers from each layer of each pallet to rebuild a new pallet.



Saints from Campbell and Santa Clara were assigned working with saints from L.A. to “mix” the pavers.





A new pallet is completed, wrapped ...



... moved to the staging location ...



... and finally transported to the paving spot.



... stored in the staging location ...

Each pallet has 384 pavers. With all the teams of L.A. and South Bay together on that weekend, we had got approximately 140 pallets completed.



After the pavers are laid, volunteering workers are sand-filling the gap and vibration-compacting the surface.



Northwest corner of the finished parking lot. According to the serving brother, the parking lot is scheduled to be completed in September 2010. During the week of Spring break, the students from Berkeley had laid 131 pallets of these pavers on the ground.



Cupertino brothers were assigned a tougher job - digging underground utility trenches and doing some building demolitions at the future Middle Age Training section.







In the afternoon of the Lord's Day, we were given a tour.



What we see here is about $\frac{1}{4}$ of the meeting space. The brother indicates that the building is permitted for 5,000 seating capacity. However, it will still have plenty room left with 5,000 seats.



This project involves very complicate structural work. You can see one of those from this photo. Some of the existing columns has been cut and removed at the bottom and supported with new steel beams in order to achieve the wide open spans.

At the end of the tour, the young brother leading the tour says, the project now has about 40 regular weekday workers. He is expecting significant increase of volunteers for the coming summer break, which will be similar to the case of last summer. On one hand, the brother wants to see familiar faces again and again since they have been trained, known the site and can get more accomplished. However, on another hand, he also would like to see more new faces too since the size of this project can provide much more opportunities for many saints to experience compared to previous construction projects. Now the construction has been mostly shifted from interior to exterior. Many saints can participate. The brother has been in the construction of this project since its beginning and finally says let's complete it soon and all can be back to our normal life.

June 2, 2010